

Our School Uniform



Eastern Fleurieu
R-12 School

EFS School Uniform Shop

9a Callington Road, Strathalbyn
(next to 7-12 Campus)

Term time Open Hours

Tuesdays 8:30am - 10:45am

Thursdays 3:45 - 5:45pm

*If our open hours do not suit you, we can take email and phone orders
and we can also arrange remote purchases for your convenience.*

For uniform enquiries, please contact Julie Martin

Bubbells Embroidery

Phone 0417 771 944

Email bubbells@adam.com.au



The Eastern Fleurieu R-12 School Uniform has been endorsed by the Governing Council and is supported across our five campuses. The wearing of school uniform creates a sense of identify and belonging to our school community.

All students are expected to wear correct uniform at all times to assist us in managing the ongoing well-being and safety of our students. The complete school uniform (excluding shoes) is available for purchase from the uniform shop.

Shirts

Plain navy or white polo shirt with EFS logo (short or long sleeved)
or Poly/cotton navy and white polo shirt with EFS logo (short sleeved)
or Plain white long-sleeved cotton shirt with collar

Jumpers

Plain navy quarter-zip windcheater with EFS logo
or Plain navy woolen jumper with EFS logo
or Plain navy blue long sleeve rugby shirt with EFS logo

Pants

Plain navy or mid-grey cotton pants
or Plain navy track pants
EFS Navy Trackpants with logo

Plain navy or mid-grey cotton pants
EFS Navy Trackpants with logo
No denim jeans.

Shorts

Plain navy or mid-grey mid length shorts. Not micro shorts.
EFS Navy School shorts with logo

Dress

Summer weight blue check cotton - EFS prescribed style and fabric.

Skirt

Winter weight woollen fabric - EFS prescribed style and fabric.

Skort

Navy blue or mid-grey

Jacket

EFS approved hooded navy spray jacket with logo
EFS Navy Full zip fleece lined with logo

Sports uniform

Top - EFS prescribed design with logo
Short - EFS prescribed design (navy)
Plain navy track pants in winter
Shoes - sports shoes and socks

Socks

Plain navy or white - ankle or knee length.

Stockings/tights/scarf

Plain navy only

Shoes

Fully enclosed black lace up, sandshoe or appropriate sandal (suitable for daily fitness)



Plain black - no logos or colour panels. Must be fully enclosed and sturdy (no canvas shoes, ugg boots, etc). Practical lessons (Tech Studies, Science, Ag, Home Ec, etc) require feet to be properly protected.



Undershirts/layering

Plain navy or white tops only - no coloured alternatives. NO hip cummerbunds or belts, NO tights under shorts, etc.



Polo shirts - several options available



Jumpers



Summer
Dress

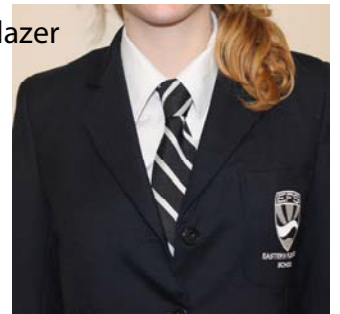
Shorts



Jackets



Blazer



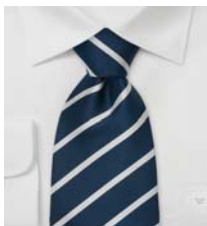
Winter
skirt



Pants



Backpack



Tie



Scarf

Sports Uniform

The sports uniform is compulsory for all Year 7-9 students and Senior students who study PE. When students are involved in any out of school sporting activity, uniforms will be loaned to students as required.



Sports Polo

Jewellery and Make-up

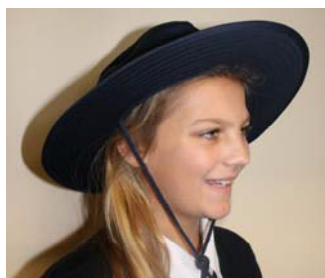
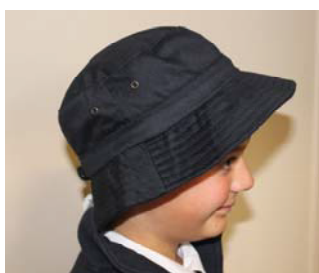
Any student's jewellery should be worn in such a way that it cannot cause danger to either themselves or others, and cannot become caught when working with machinery or during play. Make-up must be minimal and appropriate for school.

Commemorative Jumpers

In Year 6 and 12, students will be invited to purchase a commemorative jumper for their final year of primary and secondary school. Students are involved in the design of these jumpers, which are coordinated through the uniform shop and distributed when completed.

Hats

All R-6 students are required to wear a sun safe hat throughout Term 1 and Term 4 when participating in any outside activities. At the 7-12 campus students are encouraged to wear hats while outside for extended periods of time including physical education, sporting events and agriculture.



Second-hand uniform sales

The uniform shop run a quality second hand section. If uniforms are maintained to a good standard they will be able to be sold through the shop.